

DITCH PROJECTS FLOORPLAN

LARGE SPACE (1025 SQ. FT.)

General: We are in an old barn style building. The floors are grey cement (rough, not level in all places) and the ceiling is peaked w/ a low point of 13' and a high point of 24'. There are cross rafters at 13', so let us know if you want to go higher than that and we'll figure it out. There is power in the rafters and on the rough walls. Power on the white walls needs to be drilled through.

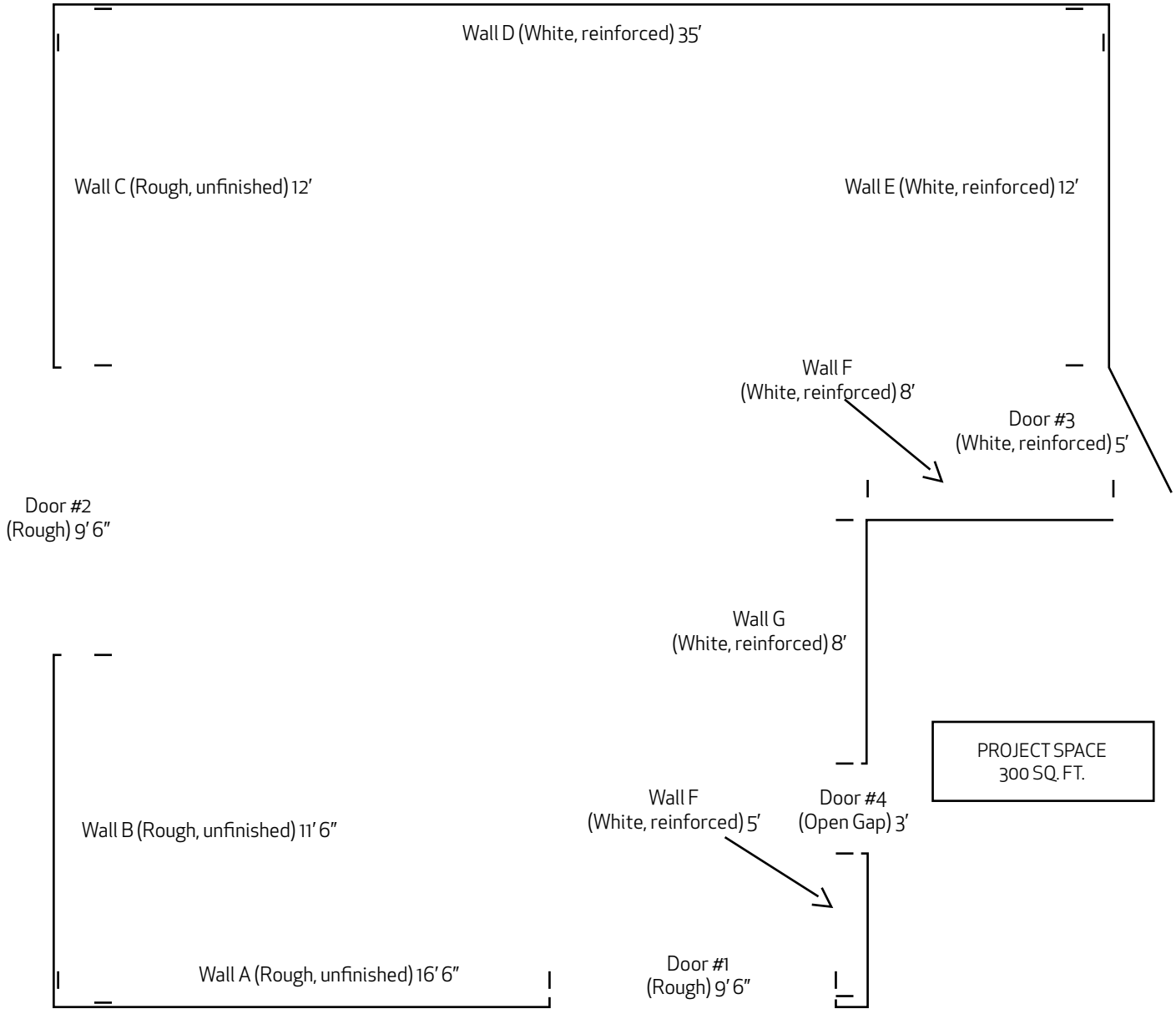
- Door #1. 9'6" sliding wooden door that opens up onto the parking lot. This is typically open as our main entrance.
- Wall A Rough, exposed wood. Green flaking paint and a large, covered up window. Serves best as a backdrop for objects, but we have hung paintings on it. There is power here.
- Wall B Rough, exposed wood. Green flaking paint. Serves best as a backdrop for objects, but we have hung paintings on it. There is power here.
- Door #2 9'6" sliding wooden door that opens up onto a balcony overlooking the Millrace River. This could be used as an entrance or could be left closed.
- Wall C Rough, exposed wood. Green flaking paint. Serves best as a backdrop for objects, but we have hung paintings on it. There is power here.
- Wall D 12' high free standing wall, level, drywall over 1/2" ply with rear access for drilling through. We'd prefer not to drill a bunch of holes for power, since this is our main wall and it's pretty perfect. But we're flexible.
- Wall E 12' high free standing wall, level, drywall over 1/2" ply with rear access for drilling through.
- Door #3 9' high door, drywall over 1/2" ply. Needs to be open and closed, so it might not be the best spot for hanging work (but it's doable.)
- Wall F 12' high wall, level, drywall on studs (not for heavy hanging.)
- Wall G 12' high wall, level, drywall on studs (not for heavy hanging.)
- Door #4 Open entryway into smaller space.
- Wall H 12' high wall, level, drywall on studs (not for heavy hanging.) This spot is really crammed in the corner in a high traffic area.

SMALL SPACE (300 SQ. FT.)

General: This is an insulated room built into our space. It is intended for media installation. There are power outlets in the walls every 4 feet at a height of about 4 feet. The walls are in reasonable condition and are white. The ceilings are 9' high. The floor is plywood, painted dove grey, and level. There is a shelf at one end of the room and a support beam in the middle of the room. There is dimmable track lighting installed on the ceiling.

- Wall I 9' high wall, fairly rough, drywall over studs, with power outlet.
- Wall J 9' high wall, fairly rough, drywall over studs, with power outlets and partially covered window frame.
- Wall K 9' high wall, fairly rough, drywall over studs, with power.
- Wall L 9' high wall, fairly rough, drywall over studs, with power outlets and a large shelf/cabinet covering a large section. Cabinet is full.
- Wall M 9' high wall, fairly rough, drywall over studs, with power outlets.

MAIN GALLERY
1025 SQ. FT.



PROJECT SPACE
200 SQ. FT.

